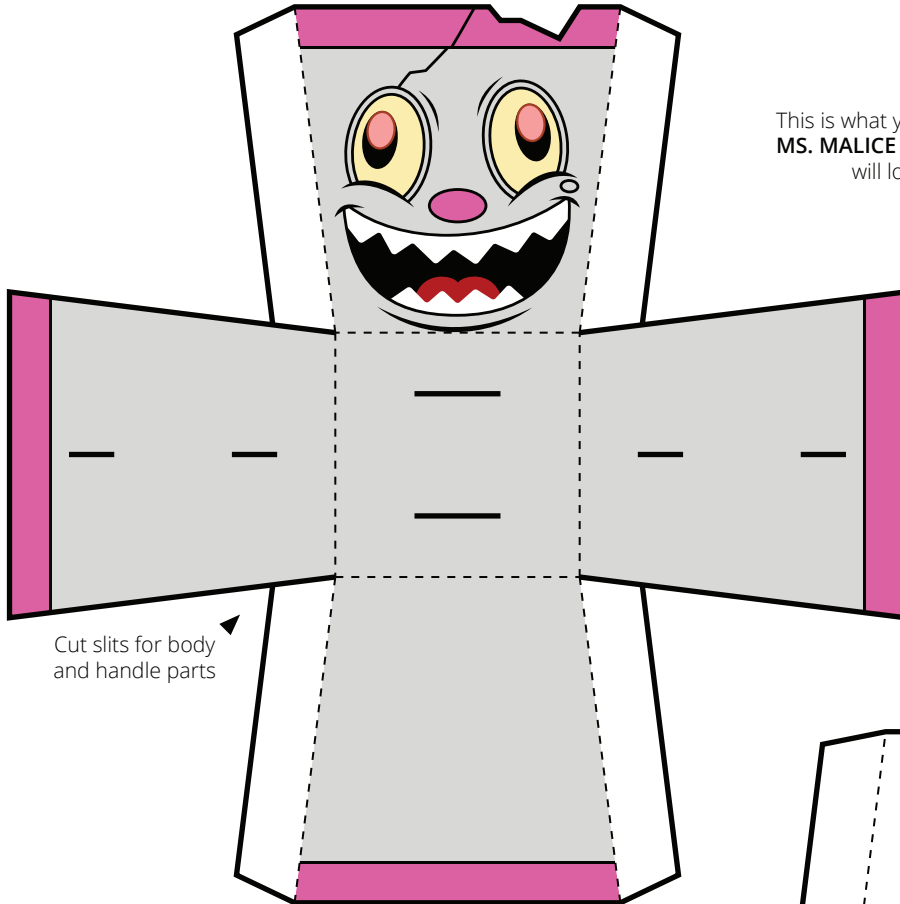


CUPHEAD

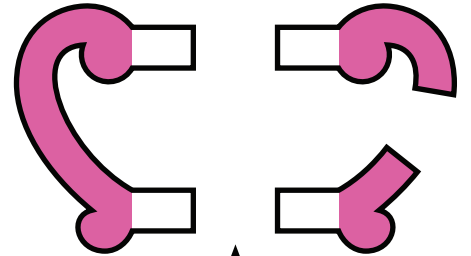
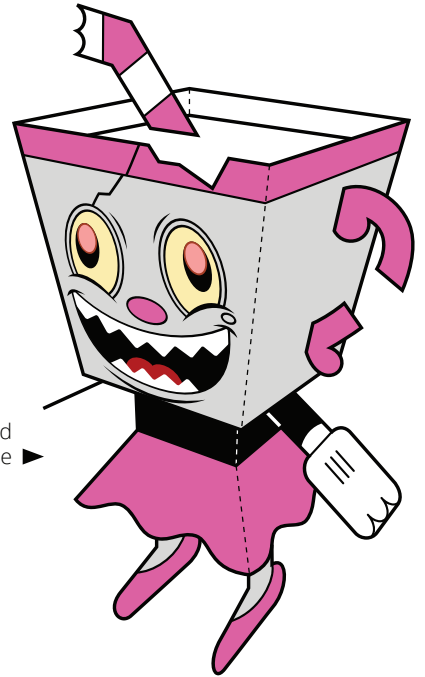
™ & © StudioMDHR cupheadgame.com

PRINT template pages on card stock paper. **CUT** along solid black outlines and slits. **FOLD** on dashed lines. **TAPE** or **GLUE** folded tabs to insides (double-sided tape or glue stick recommended). **FOLLOW** additional assembly instructions and **HAVE FUN!**



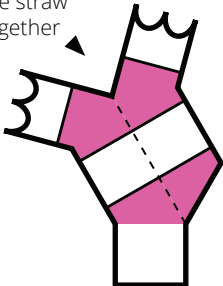
Cut slits for body and handle parts

This is what your assembled **MS. MALICE** Paper Foldable will look like!

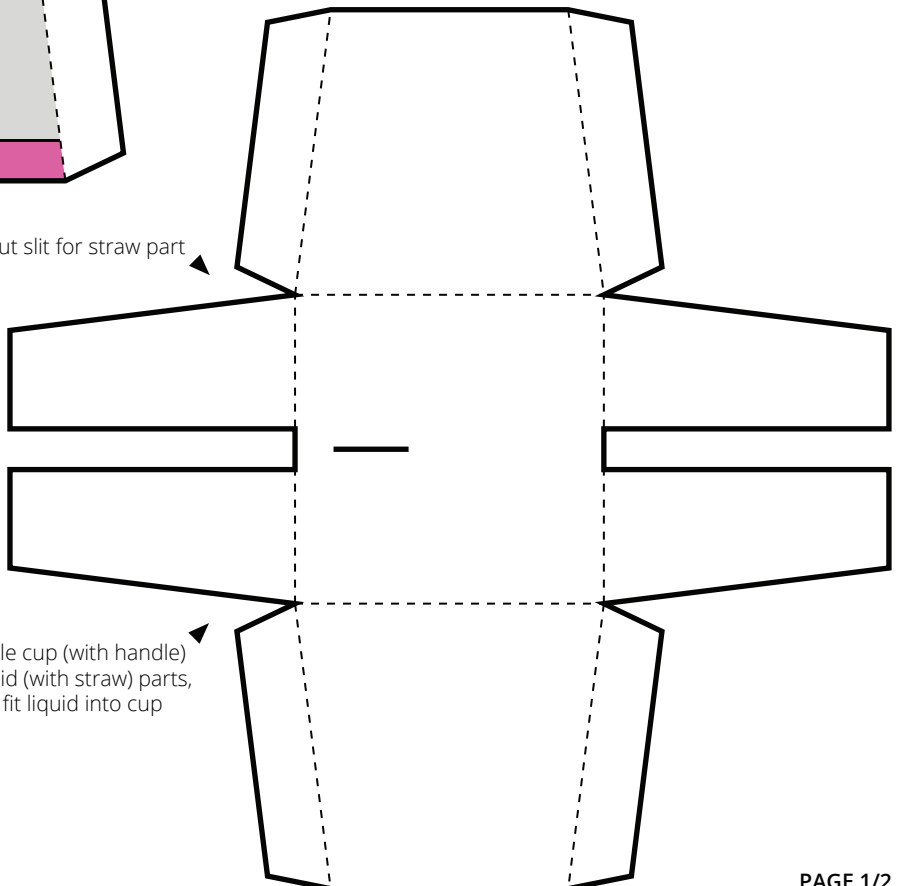


Insert tabs on handles in slits on cup sides

Tape/glue straw sides together



Cut slit for straw part



Assemble cup (with handle) and liquid (with straw) parts, then fit liquid into cup

