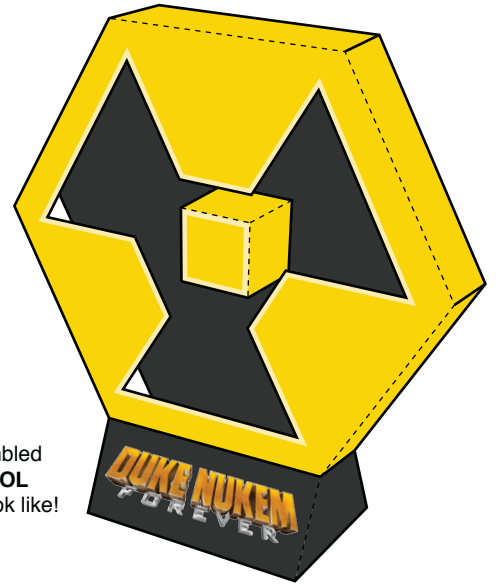
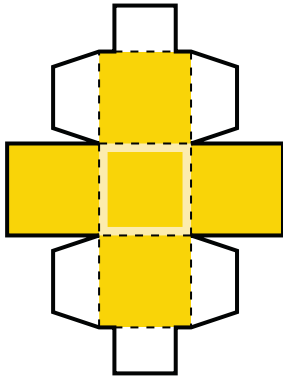


# DUKE NUKEM FOREVER

- Print template on sturdy paper
- Cut templates out carefully along solid black lines
- Cut indicated slit marks
- Score and fold along dotted lines
- Adhere tabs to corresponding sides with glue or double-sided tape

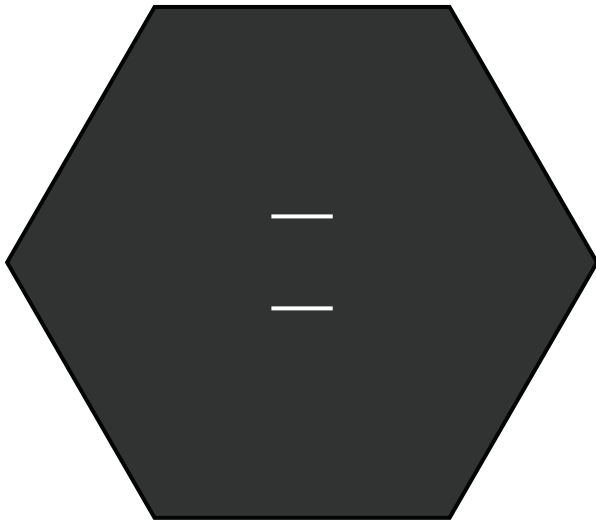


This is what your assembled  
**DUKE NUKEM SYMBOL**  
Paper Foldable should look like!



Assemble center piece,  
insert tabs into slits and adhere  
to back of flat piece below

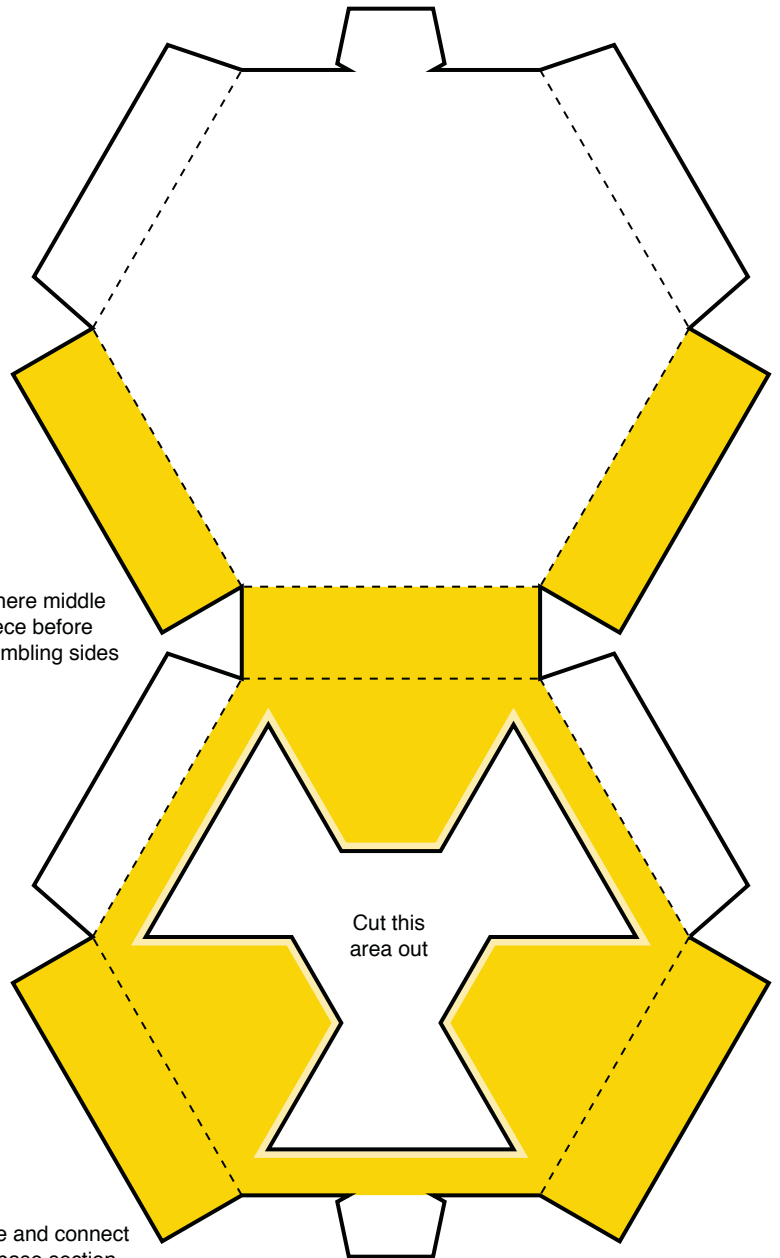
Cut indicated slits to  
attach center piece



Assemble and adhere to yellow symbol section



Cut indicated slits in base  
to attach symbol section



Adhere middle  
piece before  
assembling sides

Cut this  
area out

Assemble and connect  
tabs to base section