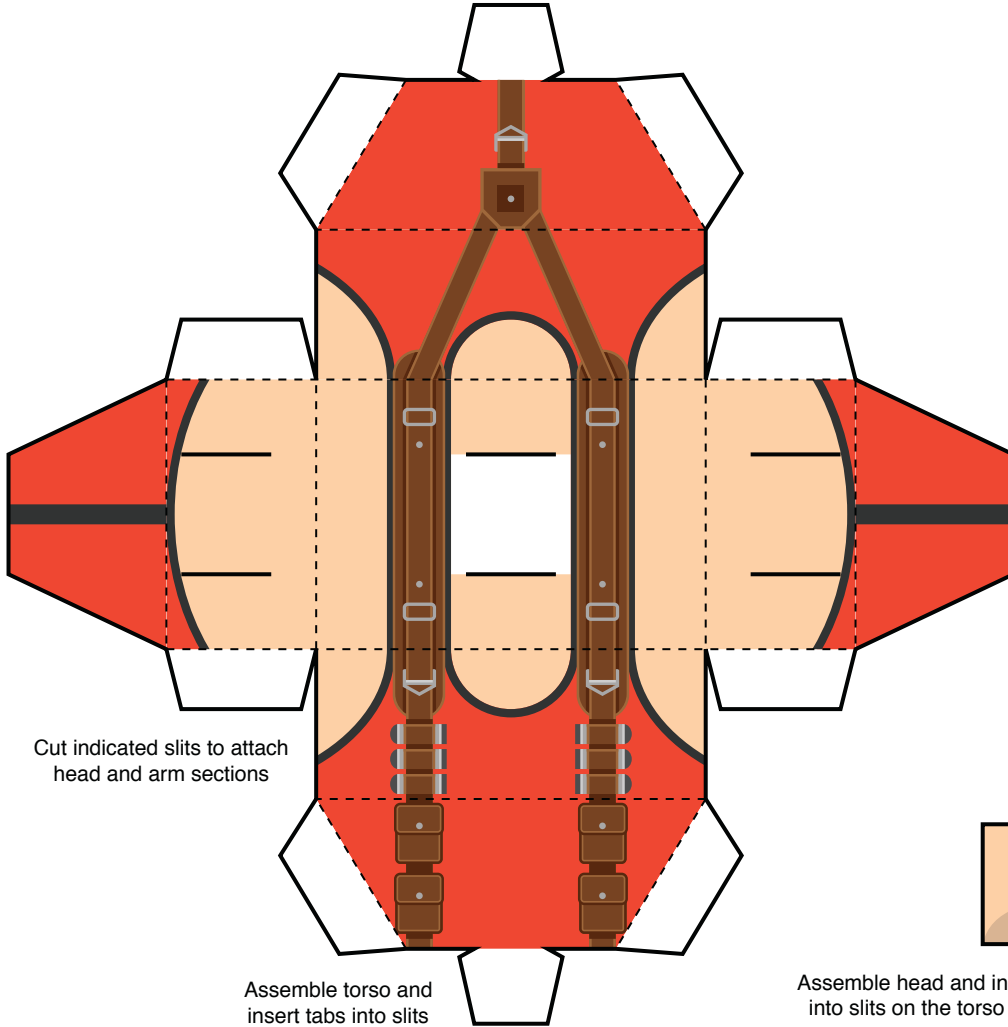
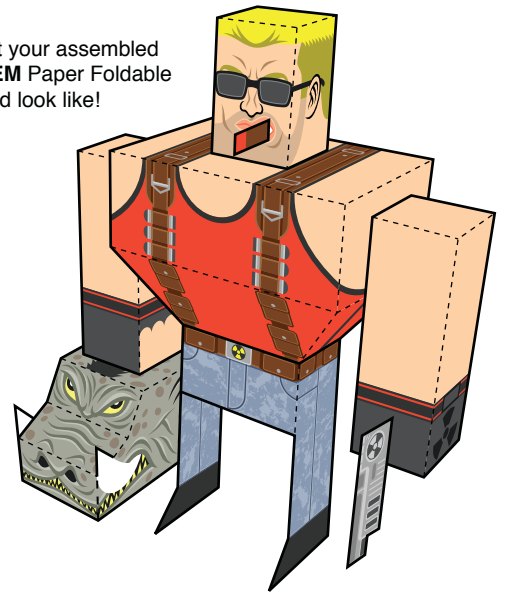


DUKE NUKEM FOREVER

- Print template on sturdy paper • Cut templates out carefully along solid black lines
- Cut indicated slit marks • Score and fold along dotted lines
- Adhere tabs to corresponding sides with glue or double-sided tape

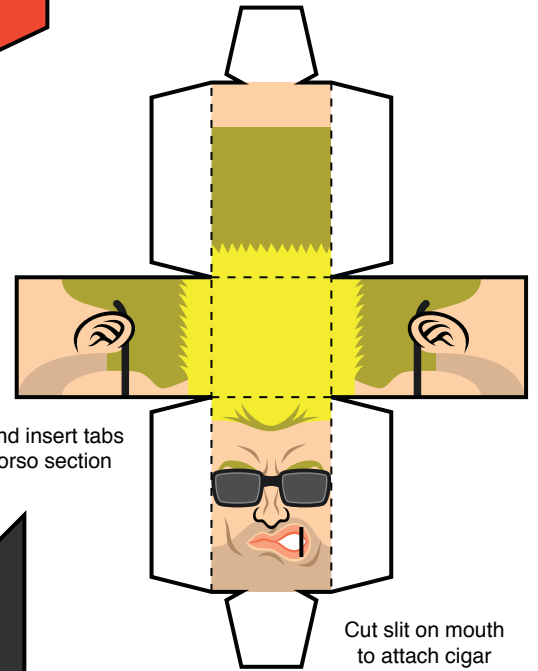
This is what your assembled
DUKE NUKEM Paper Foldable
should look like!



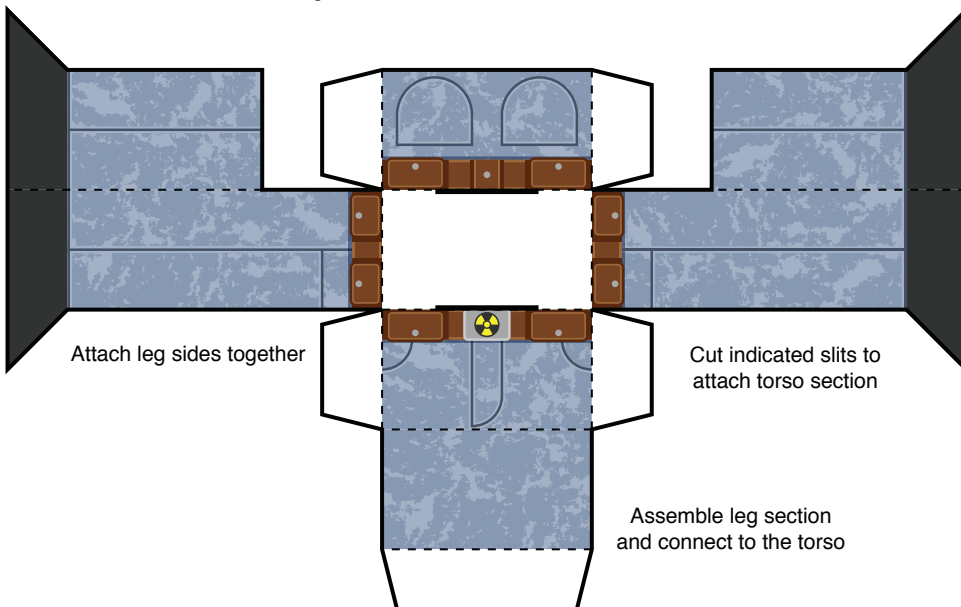
Cut indicated slits to attach
head and arm sections

Assemble torso and
insert tabs into slits
on the leg section

Assemble head and insert tabs
into slits on the torso section



Cut slit on mouth
to attach cigar



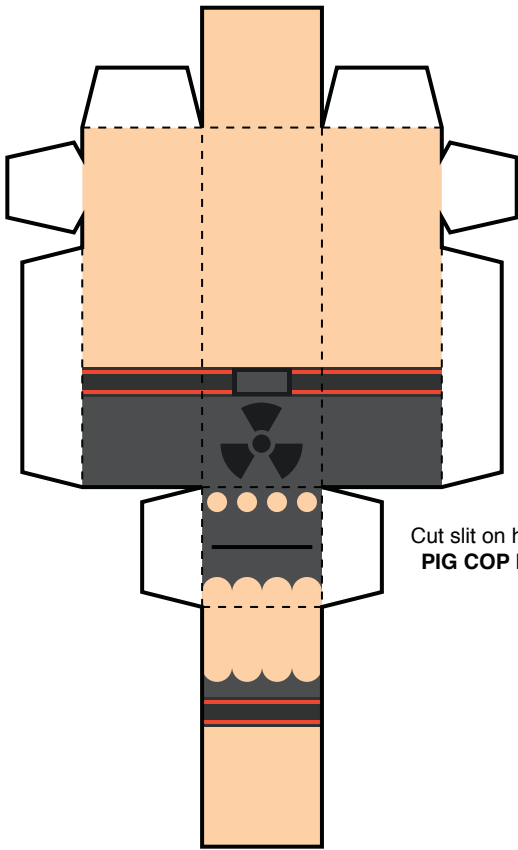
Attach leg sides together

Cut indicated slits to
attach torso section

Assemble leg section
and connect to the torso

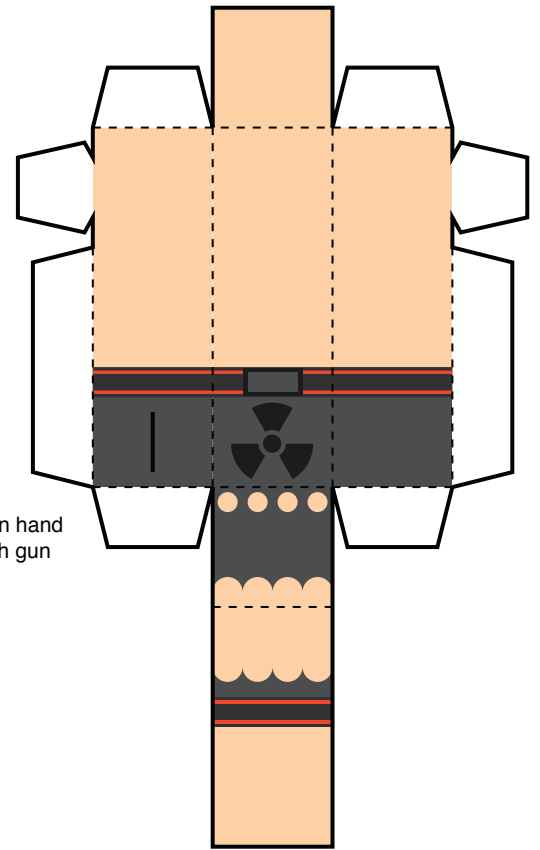


Attach cigar sides together
and insert end into slit on mouth



Assemble arms and insert tabs into slits on the torso section

Cut slit on hand to attach **PIG COP** head section

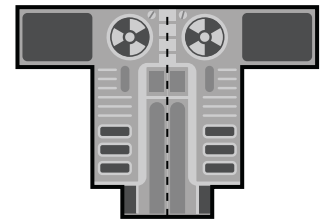


Cut slit on hand to attach gun

Attach mohawk sides together and insert tab into slit on head



Attach gun sides together and insert handle into slit on arm section



Assemble **PIG COP** head and connect mohawk to slit on **DUKE'S** hand

