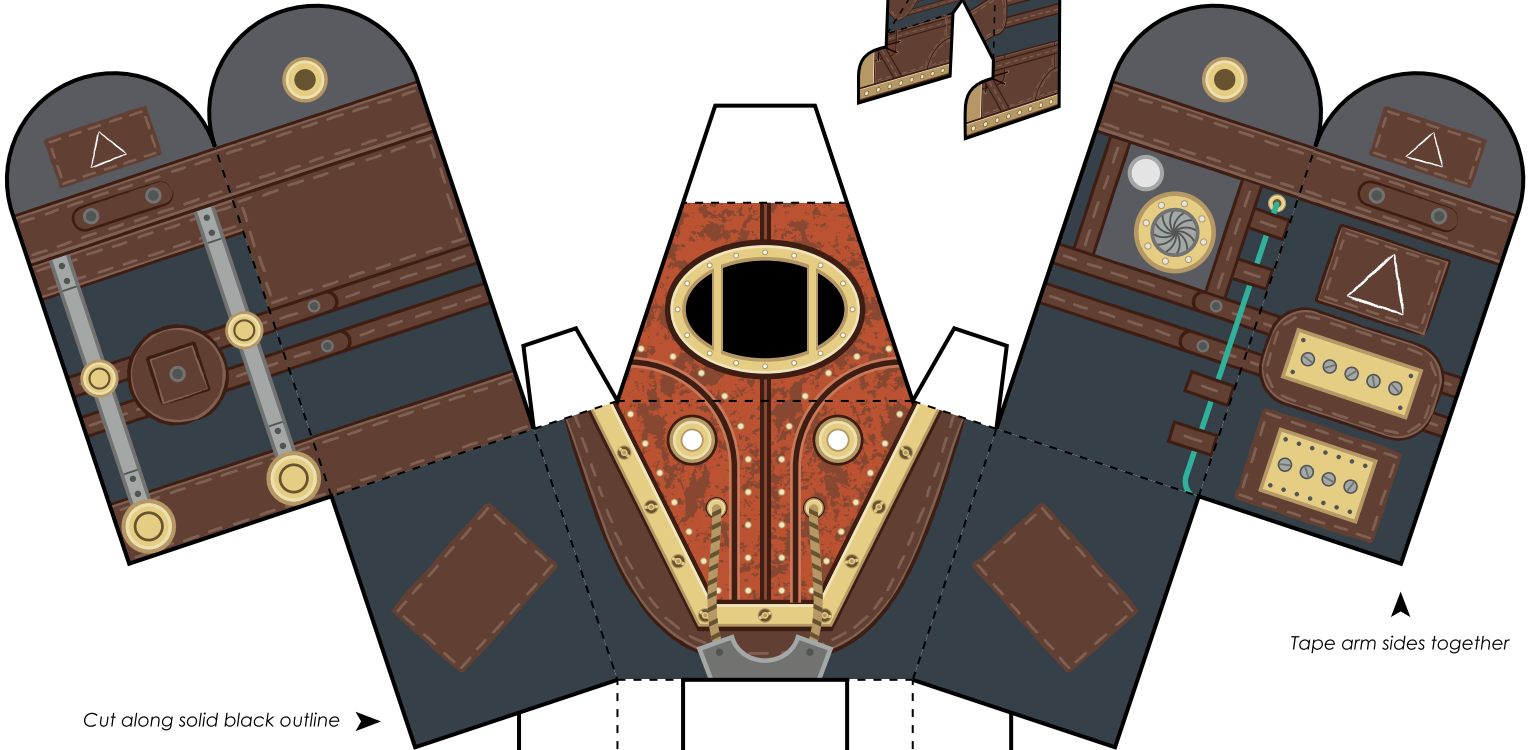




Print template on sturdy paper and follow instructions using a hobby knife and double-sided tape to assemble your official **BioShock 2** Paper Foldable

SUBJECT DELTA

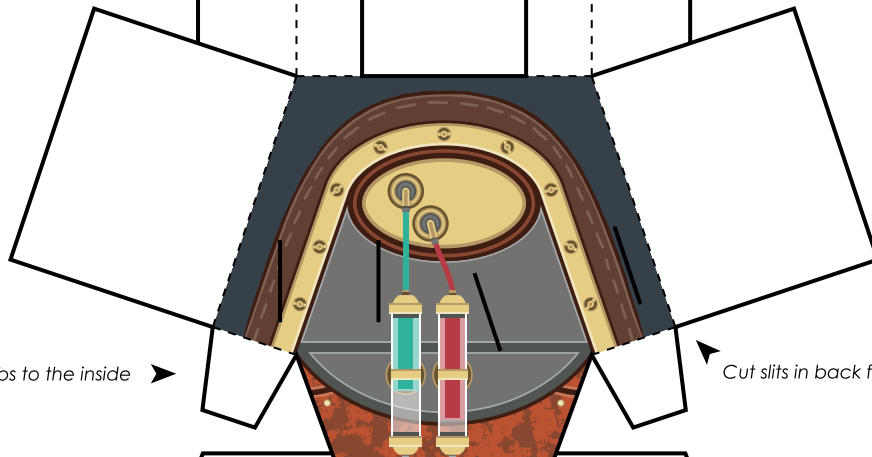
This is what your assembled "Subject Delta" Paper Foldable should look like!



Cut along solid black outline

Tape arm sides together

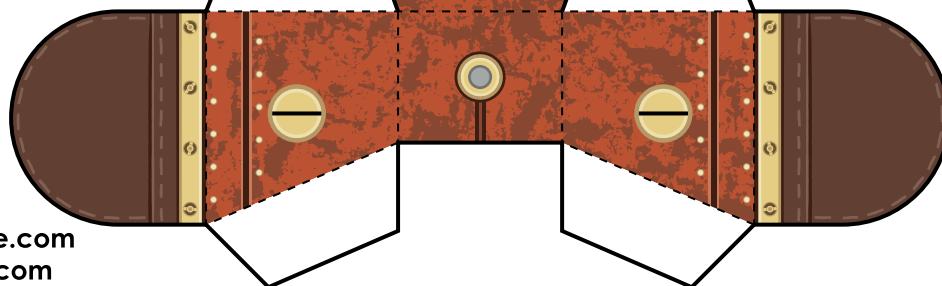
Cut this area out

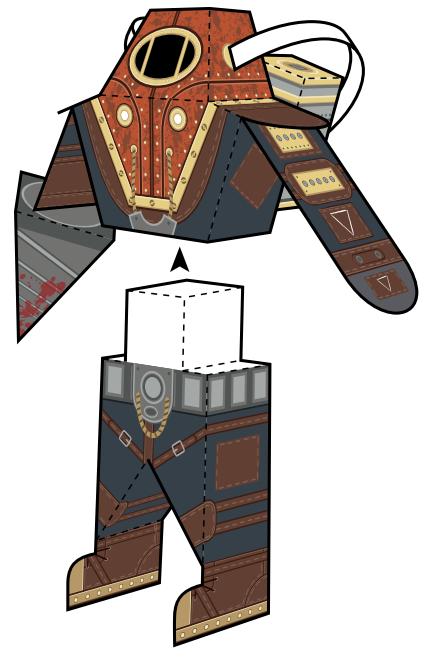


Tape folded tabs to the inside

Cut slits in back for tanks to attach

Fold on dotted lines





Insert tab into slit

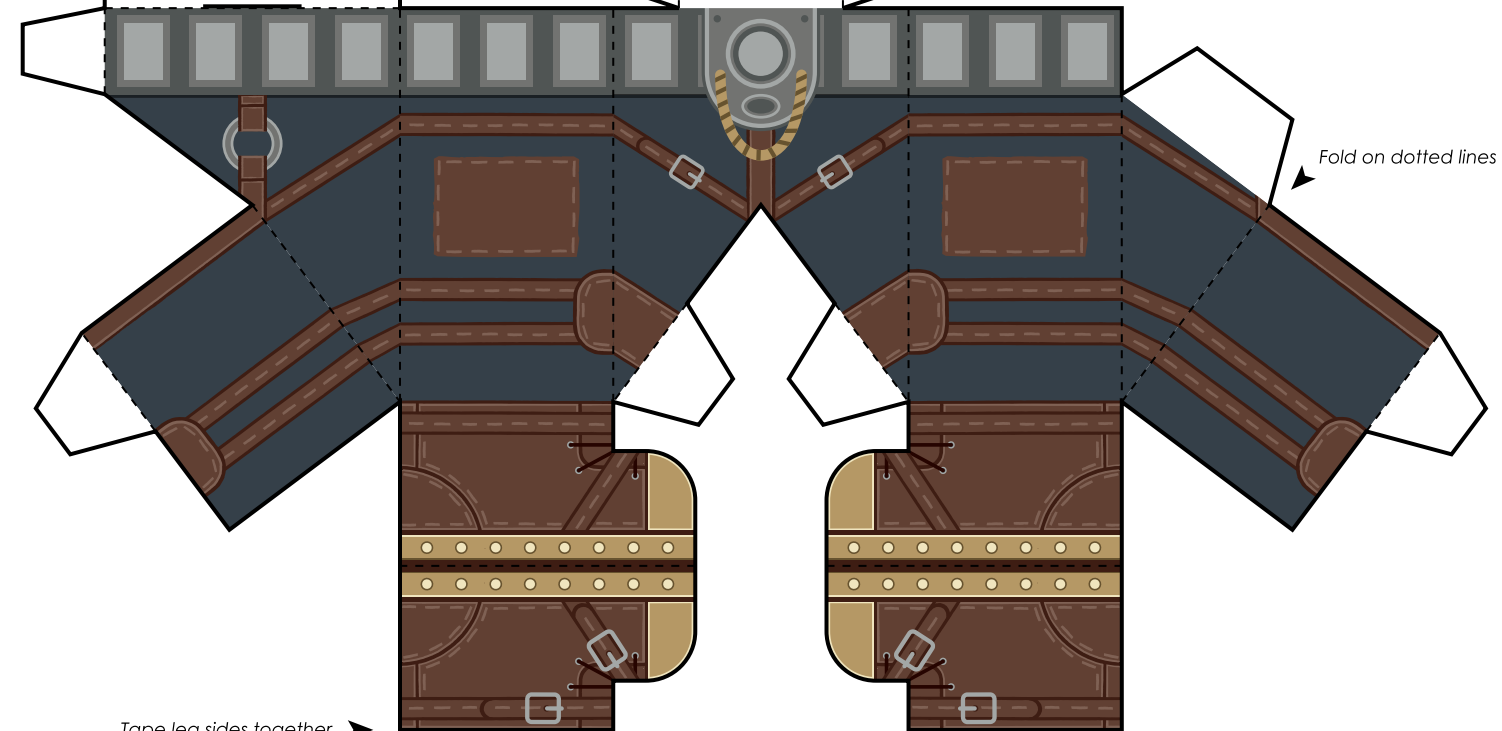
Tape folded tabs to the inside

Cut along solid black outline

Connect this section into bottom of torso section once assembled

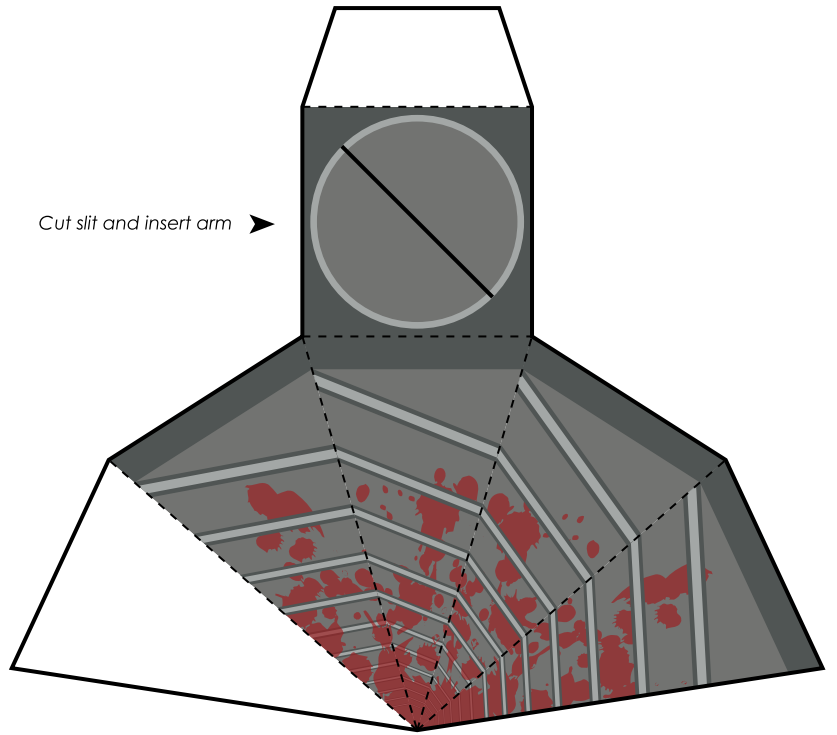
Fold on dotted lines

Tape leg sides together

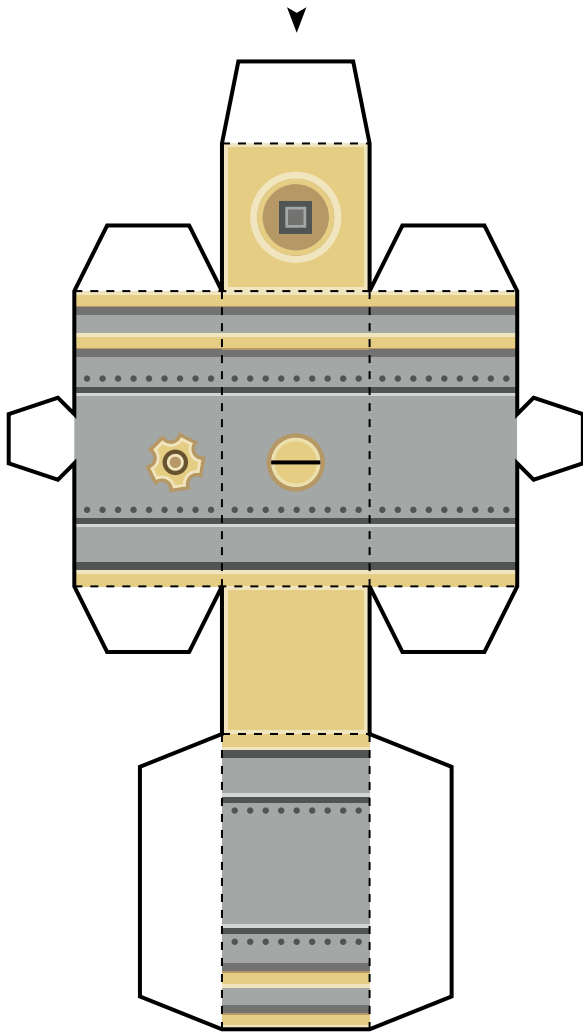




Cut slit and insert arm ▶



Assemble tanks and insert tabs into slits in back ▼



◀ Insert ends into slits in tanks and side of the head

