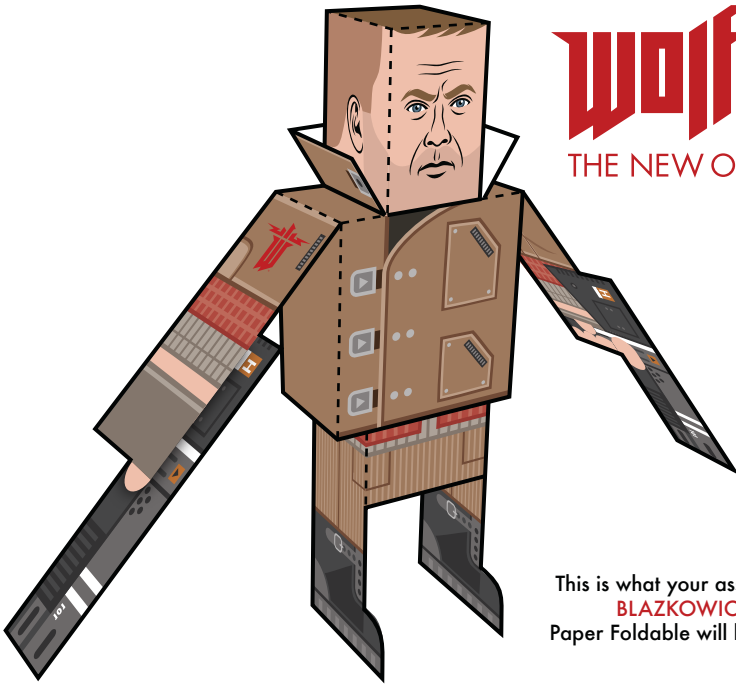


Wolfenstein®

THE NEW ORDER™

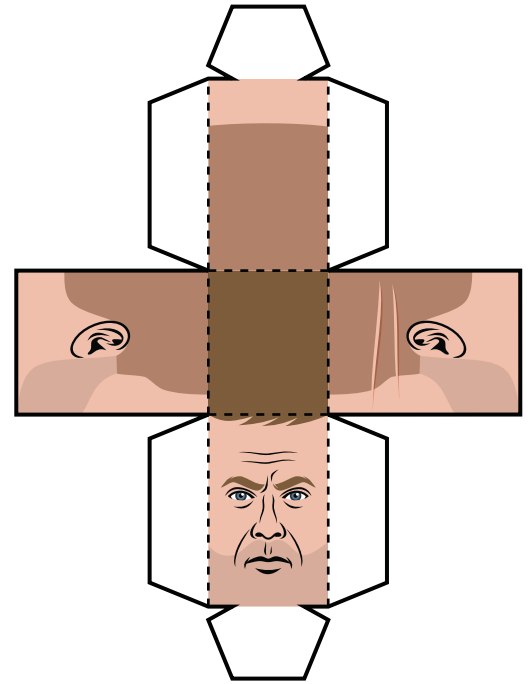
Print template on sturdy paper.
Cut-out along solid black outlines.
Cut slits to connect separate parts.
Fold on dotted lines.
Tape/glue folded tabs to insides.

*Recommended materials: cardstock paper,
hobby knife, double-sided tape or glue stick.*

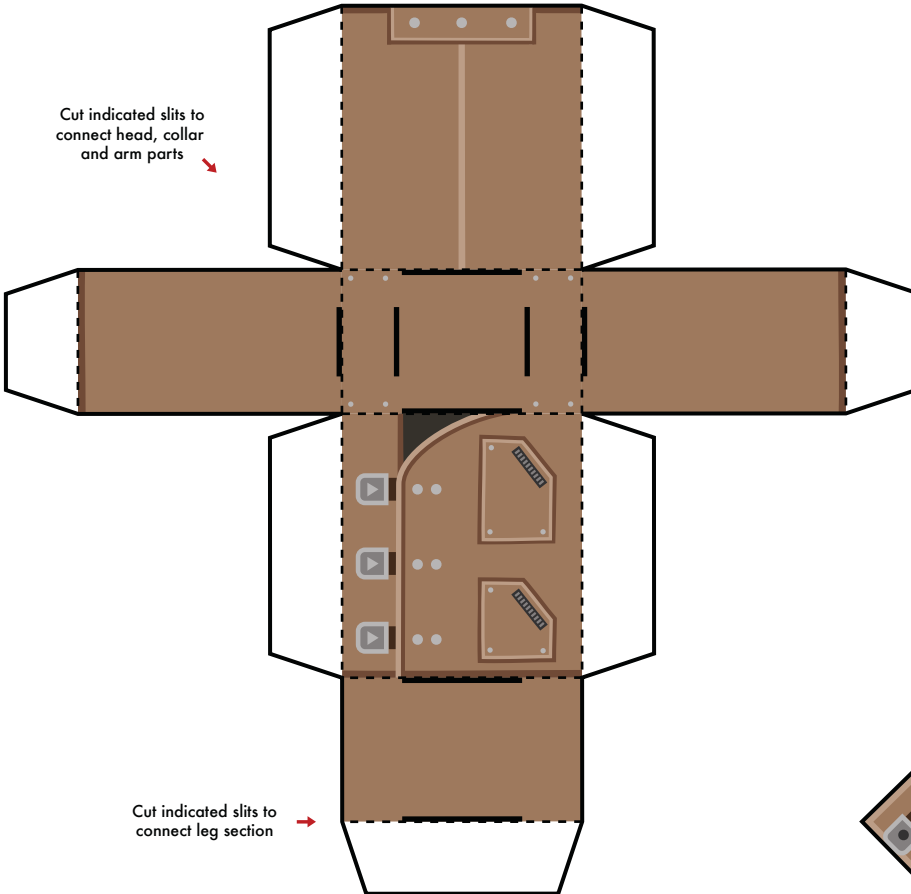


This is what your assembled
BLAZKOWICZ
Paper Foldable will look like.

Assemble head and connect
tabs to corresponding slits →



Cut indicated slits to
connect head, collar
and arm parts →



Cut indicated slits to
connect leg section →

Assemble collar and connect
tabs to corresponding slits
↓

