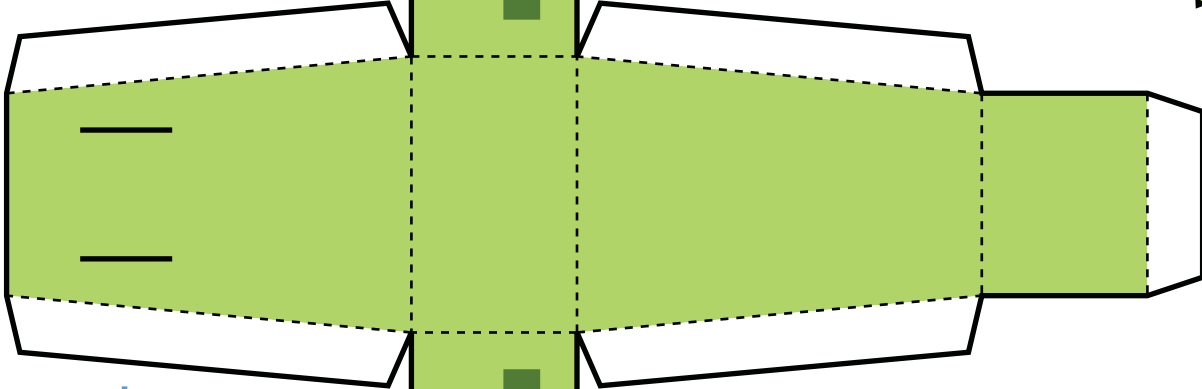
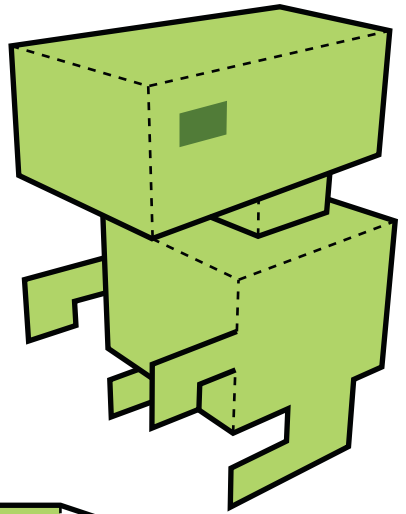




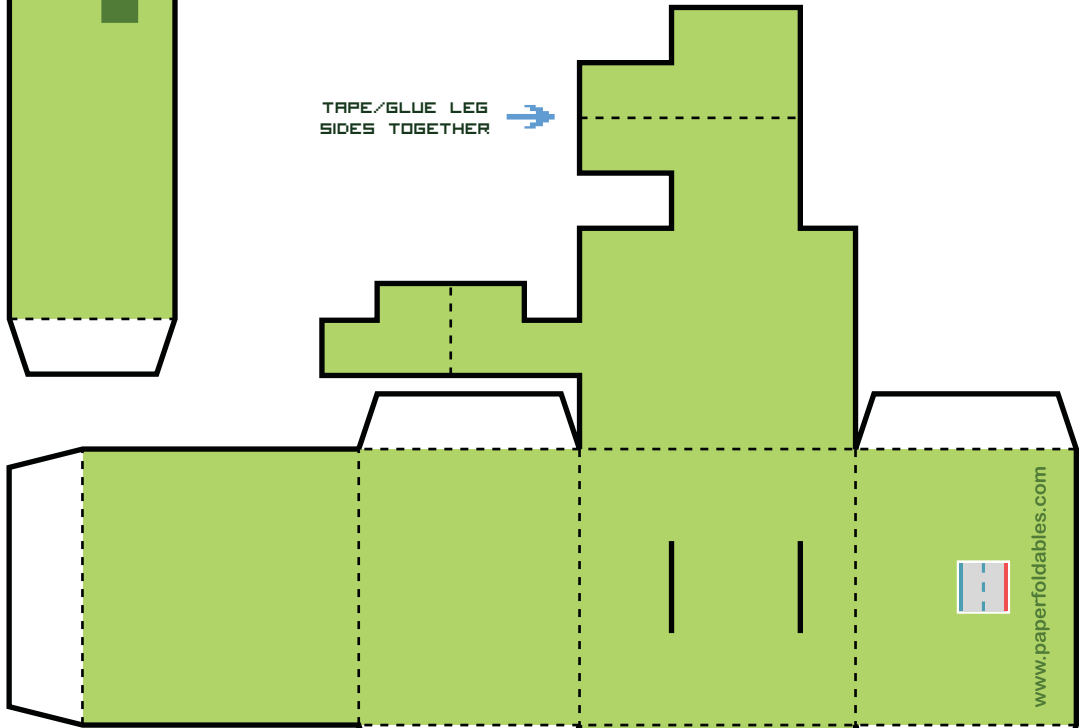
PRINT TEMPLATE ON CARDBOARD.
 CUT-OUT ALONG BLACK OUTLINE.
 FOLD ON DOTTED LINES.
 TAPE/GLUE FOLDED TABS TO INSIDES.
 DOUBLE-SIDED TAPE RECOMMENDED

THIS IS WHAT YOUR ASSEMBLED
 "E.T. 2600" PAPER FOLDABLE
 WILL LOOK LIKE!



CUT SLITS TO
 CONNECT NECK PIECE

TAPE/GLUE LEG
 SIDES TOGETHER



ASSEMBLE NECK PIECE AND USE TABS
 TO CONNECT HEAD AND BODY PIECES

TAPE/GLUE ARM
 SIDES TOGETHER

CUT SLITS TO
 CONNECT NECK PIECE

